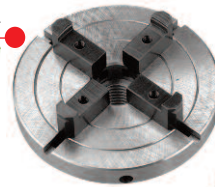




### Lathe chuck

Lathe chuck for lathe spindle M33/M24 spindle thread with 4 centred jaws for interior and exterior tension. Supplied with M33 / M24 adaptor and the necessary lock tension pins.

Stock no	205250103		
Diameter	mm	125	
Number of jaws	4		
Interior tension min-max	mm	90-120	
Exterior tension min-max	mm	70-100	
Attachment thread	M24x3/M33x3.5		
Price	£65.00		



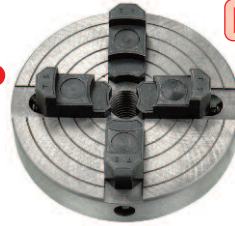
**NEW**



### Lathe chuck

Lathe chuck for lathe spindle M33/M24 spindle thread with 4 individual adjustable step jaws for interior and exterior tension. Supplied with M33 / M24 adaptor and necessary key.

Stock no	205260102		
Diameter	mm	150	
Number of jaws (segments)	4		
Interior tension min-max	mm	120-160	
Exterior tension min-max	mm	25-130	
Attachment thread	M24x3/M33x3.5		
Price	£42.00		



**NEW**



## Sanding

### Disc sander

Disc sander for sanding wood. Cast iron sanding table, adjustable 90°-45°, with gear rack and equipped with mitre guide. Supplied with aluminium polishing disc. Velcro back for sanding paper. Equipped with manual disc brake. Connection for suction hose with sleeve 57 mm. Enclosure class IP 54

Stock no	200095909		
Polishing disc diameter	mm	305	
Table size	mm	435 x 165	
Table height	mm	245	
Disc speed	rpm	1420	
Motor voltage	V	230 1 phase 50Hz	
Motor output	kW	0.74	
Weight	kg	33	
Price	£175.00		



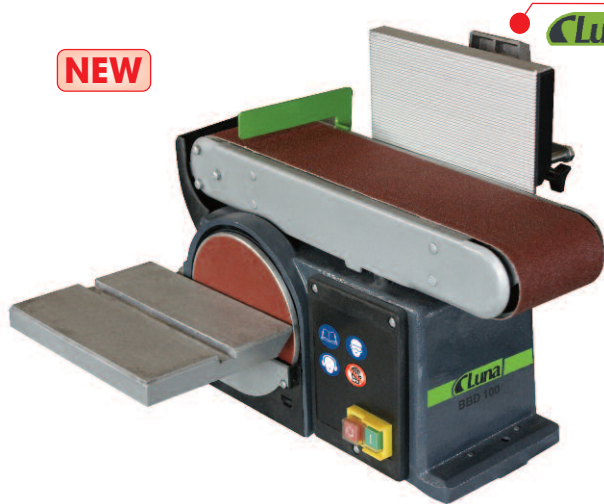
**NEW**



## Sanding

### Combined belt/sanding machines

Combined belt and disc sanding machine for wood. Adjustable sanding table (45°) with mitre line used with disc polishing. The polishing bar can be variably adjusted vertically and is equipped with a 45° tiltable length stop (for edge sanding and bevelling) and an end stop. Belt tightener and adjustment wheel allow simple changing and adjustment of abrasive belt, mitre line, length stop and end stop. Ready for connection to an extractor with 63 mm sleeve, enclosure protection class IP 44.



Stock no	205195902	
Belt dimension	mm	100 x 915
Band speed	m/s	8
Sanding disc diameter	mm	150
Sanding disc speed	rpm	2850
Motor voltage	V	230 1 phase 50Hz
Motor output	kW	0.44
Weight	kg	20
Price	£125.00	

### Combined belt/disc sanding machines

Combined belt and disc sanding machine. Heavy duty design with cast iron base providing excellent stability. The sanding bar can also be variable adjusted vertically - covered with graphite cloth. Quick locking of the abrasive belts with automatic adjustment. Easy lateral belt adjustment. Disc sanding table adjustable 90-45°, equipped with mitre guide. Disc pad for self fixing sanding discs. Ready for connection to an extractor. Enclosure protection class IP 44. Supplied with zero voltage tripping, aluminium sanding table with stop, mitre guide and abrasive belt.



Stock no	206455909	
Belt dimension B x L	mm	150 x 1220
Band speed	m/s	8.6
Polishing disc diameter	mm	250
Sanding disc diameter	rpm	1440
Sanding table (disc sanding) W x L	mm	200 x 355
Connection sleeve Ø	mm	63
Motor voltage	V	230 1 phase 50Hz
Motor output	kW	0.8
Weight	kg	47
Price	£330.00	
Stand	206450504	
Price	£40.00	



## Belt sanding machines

Belt sander in floor model design. Simple belt tension with lever and adjustment with wheel. The sanding bar, which is equipped with a graphite pad, can easily be folded 90° in relation to the sanding table. The front sanding board is also adjustable for maximum use of the abrasive belt. Enclosure class IP54. Supplied with 2 sanding tables in aluminium, both tiltable 0-45° and with mitre guide, sanding belt, extractor sleeve and stand.

Stock no		205585904	205580202
Max sanding length	mm	790	790
Abrasive belt dimension	mm	150 x 2000	150 x 2000
Band speed	m/sec	13	13
Working height	mm	800	800
Bench size, front bench	mm	790 x 220	790 x 220
Bench length, side bench	mm	510 x 220	510 x 220
Sanding roll diameter	mm	70	70
Extraction sleeve	mm	100	100
Motor voltage	V	230 1 phase 50Hz	400 3 phase 50Hz
Motor output	kW	1.5	1.5
Weight	kg	86	86
<b>Price</b>		<b>£465.00</b>	<b>£460.00</b>



## Belt sanding machines

Oscillating, combined edge and surface sander. The sanding bar can be variably adjusted 90° in relation to the sanding table - vertical position for surface sanding. Equipped with belt tension and release mechanism, side adjuster, graphite cloth and end stop. With adjustable end sanding table. Cambered aluminium, sanding roller. Sanding table: Heavy duty cast iron with slots for the mitre guide and spring loaded height adjustment. Stand cabinet with practical storage area with shelves and doors. Supplied with mitre guide, sanding belt, end stop, extraction sleeve and graphite cloth on the sanding bar. Ready for connection to dust extractor.

Stock no		126500107
Max sanding length	mm	900
Abrasive belt dimension	mm	150 x 2515
Band speed	m/sec	16
Working height	mm	950
Table size, fixed sanding table	mm	840 x 303
Height adjustment	mm	80
Table size end table (tilts 45°)	mm	300 x 250
Motor output	kW	1.5
Motor voltage	V	400 3 phase 50Hz
Connection sleeve Ø	mm	100
<b>Price</b>		<b>£730.00</b>

